

# Gloo Mesh Enterprise

Gloo Mesh Enterprise delivers connectivity, security, observability, and reliability for Kubernetes, VMs and microservices and supports single cluster to multi-cluster, hybrid environments and enterprise support for Istio.

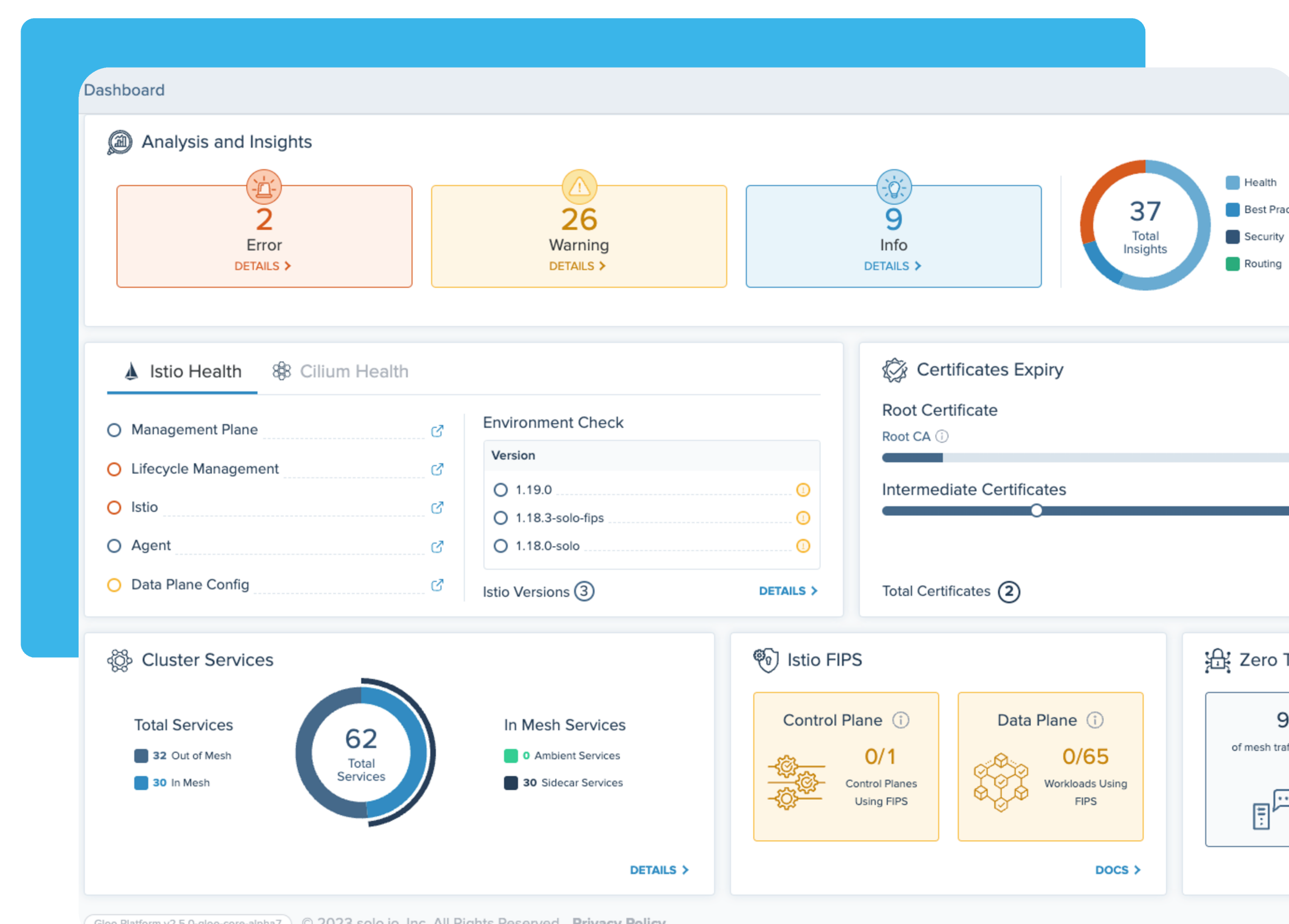
## OMNI

- Home
- Logging
- Metrics
- Insights
- Security
- OpenTelemetry
- Tracing

## Struggling to scale and secure your containers and Kubernetes?

Many companies find early success building modern, containerized applications and take the first steps in their digital transformation. But taking the next steps to scale, secure, and run those applications across multiple clouds can be challenging. As more clusters are added and additional application development teams work together, the numerous connections between multiple services can become daunting to control.

To address this challenge, many companies look to add a service mesh to simplify security, improve scalability, and reduce the ongoing burden of maintaining modern applications. Choosing the right service mesh can be complicated, as many standards exist, and not all of them support the enterprise capabilities needed to succeed.



## Achieve your digital goals with Gloo Mesh Enterprise

Gloo Mesh Enterprise is the industry's leading service mesh, built on the Istio standard used by countless organizations. Designed to extend the functionality of Kubernetes, Gloo Mesh Enterprise enables your applications to stay securely connected as you scale to meet growing demands.

Gloo Mesh Enterprise allows modern DevOps teams to elevate their Kubernetes environments by integrating Zero Trust Security, Multi-Tenancy, Multi-Cluster, and Multi-Cloud capabilities. Powered by Istio, Gloo Mesh Enterprise supports single-cluster deployments and scales to large multi-cluster environments, making it easier to maintain your application as it grows across any Kubernetes instance and cloud environment.

Gloo Mesh Enterprise can be combined with Gloo Gateway to connect the service mesh and API gateway to address more of your application networking requirements.

The Solo.io portfolio enables a **rich set of enterprise capabilities** for advanced security and authentication, advanced routing, and advanced public and private cloud integrations.

## Benefits for your environment

- ✓ Sidecar-less Proxy
- ✓ Alternative
- ✓ Istio Lifecycle and Support
- ✓ Federated Multi-Cluster and
- ✓ Hybrid Cloud
- ✓ Multi-Cluster Observability
- ✓ Multi-Tenancy Self-Service
- ✓ Zero Trust Security
- ✓ FIPS 140-2 Compliance

## Features

- ✓ Built with Istio
- ✓ TLS/mTLS Encryption
- ✓ Federated Trust Domains
- ✓ Ambient Mesh Support
- ✓ Multi-Cluster Dynamic Routing
- ✓ No-Interruption Updates

## What people are saying about Gloo Mesh Enterprise

One of the key challenges that we faced was when we were assessing service mesh providers and had relied upon support that simply never materialized. We found what we were looking for with Solo and Gloo Mesh. The responsiveness of the support and the focus on building partnerships with customers and clients — we see it as an interactive partnership to move forward to enhance the platform.

Tom Howard  
Cloud Networking Lead, Invitae

For More Information

[Request a demo](#)

## About Solo.io

Solo.io, the leading application networking company, delivers a service mesh and API platform for Kubernetes, zero trust, and microservices. The components of Gloo Gateway and Gloo Mesh enable enterprise companies to rapidly adopt microservice applications as part of their cloud journey and digital transformation. Solo.io delivers open source solutions, and is a community leader in building the technologies of the future.

**SOLO.IO**

[Learn more](#)

[www.solo.io](http://www.solo.io)